

LDRPS-Web v10 (L10) Release Notes

<https://enterprise.strohlservices.com>

This release notes document contains known system bugs and issues with the current release. Please note that this document will be updated as current issues are resolved or new issues are discovered. If you become aware of an issue not documented here, please notify OSU LDRPS Support at ldrps_support@osu.edu

Contents

Installation tips	1
Known problems and their work-arounds	1
<i>Related Records</i>	1
<i>Reports</i>	2
<i>Teams</i>	2
<i>Processes</i>	2

Installation tips

First time users should follow the instruction in the document “How to Log into LDRPS Web L10”. This document contains most of the setup instructions for using LDRPS. A copy of the document can be found on the OSU LDRPS site

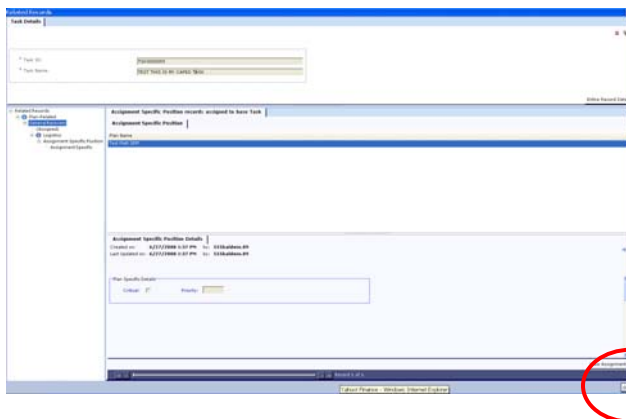
<http://oit.osu.edu/hrfin/ldrps10>

Known problems and their work-arounds

Related Records

When un-assigning records from a plan the User is sometimes taken to the Related Records screen.

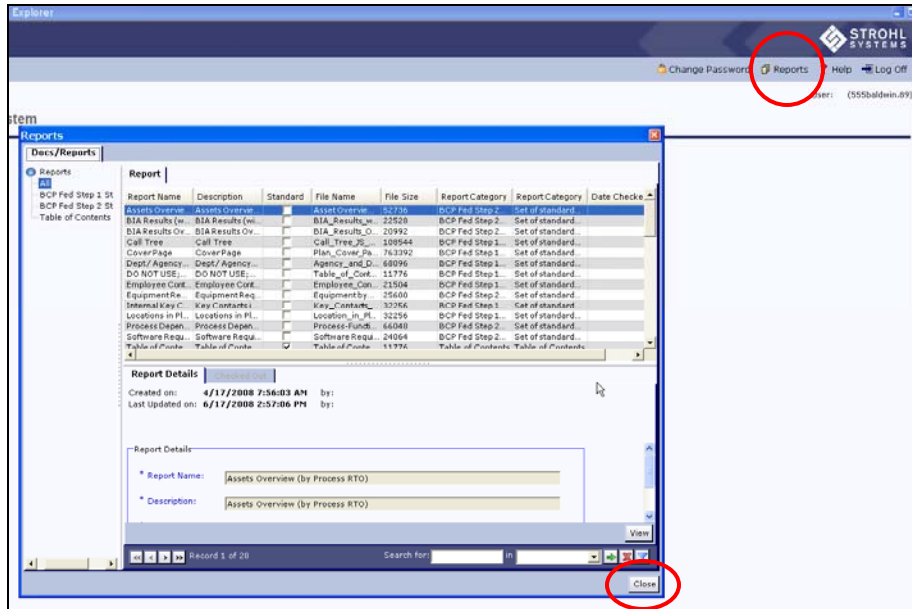
To work around this issue, click the OK button in the bottom right of the Related Records screen. This will return you to the original screen on which you were working. Follow the Navigator instructions to “Un-assign” the record.



Reports

After running a report from the Reports screen, the file download pop-up screen will not appear until the Reports screen is closed by the User.

To work around this issue, simply click on the Reports screen “close” button to view the report.



Teams

1. Unable to delete Team Positions.

No workaround at this time; contact your administrator to delete positions.

2. Unable to see the save, delete, etc. buttons in the Team Assignments section.

If the buttons are not available the current workaround is to logout and log back into the system.

Processes

Unable to open Process in the “Assign Continuity Tasks” or “Assign Assets and Teams to Processes” sections.

If you are unable to open a process the current workaround is to logout and log back into the system.